



Bondfield Walk, Dartford, DA1 5JS
Guide Price £325,000 - £350,000 Freehold

 2
  1
  1
  D

Guide Price £325,000 - £350,000 The Homes Group are delighted to present to the market this two double bedroom terrace house located within easy reach of town centre and a variety of education facilities. The home offers well proportioned rooms with the main bedroom large enough to create two separate bedrooms, as many other local homes have done. The front of the house situated along a quiet pedestrian walkway. To the rear is a 30' garden and parking for two cars.

Entrance Porch

Entrance Hall

8'2 x 7' (2.49m x 2.13m)

Living Room

19'10 x 11'1 (6.05m x 3.38m)

Kitchen

11'1 x 7'10 (3.38m x 2.39m)

Conservatory

17'9 x 10' (5.41m x 3.05m)

Utility

11' x 4'1 (3.35m x 1.24m)

Landing

Bedroom One

18'6 x 8'10 (5.64m x 2.69m)

Bedroom Two

10'8 x 10'5 (3.25m x 3.18m)

Bathroom

7'7 x 5'4 (2.31m x 1.63m)

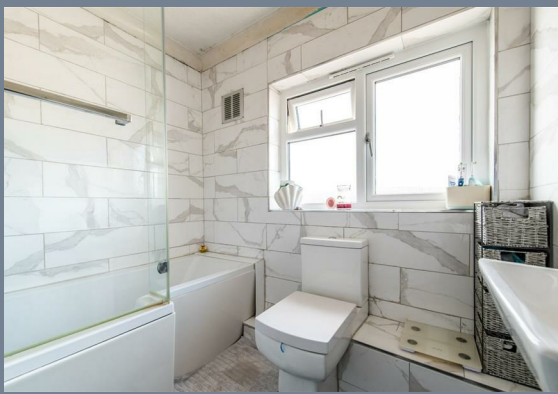
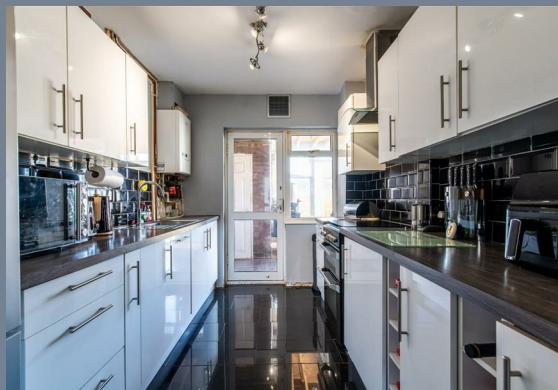
Rear Garden

30' (9.14m)

Hardstanding

Tenure: Freehold

Council Tax: Band C





Ground Floor
Approx. 55.2 sq. metres (593.8 sq. feet)



First Floor
Approx. 34.1 sq. metres (367.0 sq. feet)



Total area: approx. 89.3 sq. metres (960.8 sq. feet)



Energy Efficiency Rating		
	Current	Potential
Very energy efficient - lower running costs		
(92 plus) A		
(81-91) B		
(69-80) C		76
(55-68) D	62	
(39-54) E		
(21-38) F		
(1-20) G		
Not energy efficient - higher running costs		
England & Wales	EU Directive 2002/91/EC	

Viewing

Please contact The Homes Group Office on 01322 875000 if you wish to arrange a viewing appointment for this property or require further information.

These particulars, whilst believed to be accurate are set out as a general outline only for guidance and do not constitute any part of an offer or contract. Intending purchasers should not rely on them as statements of representation of fact, but must satisfy themselves by inspection or otherwise as to their accuracy. No person in this firm's employment has the authority to make or give any representation or warranty in respect of the property.